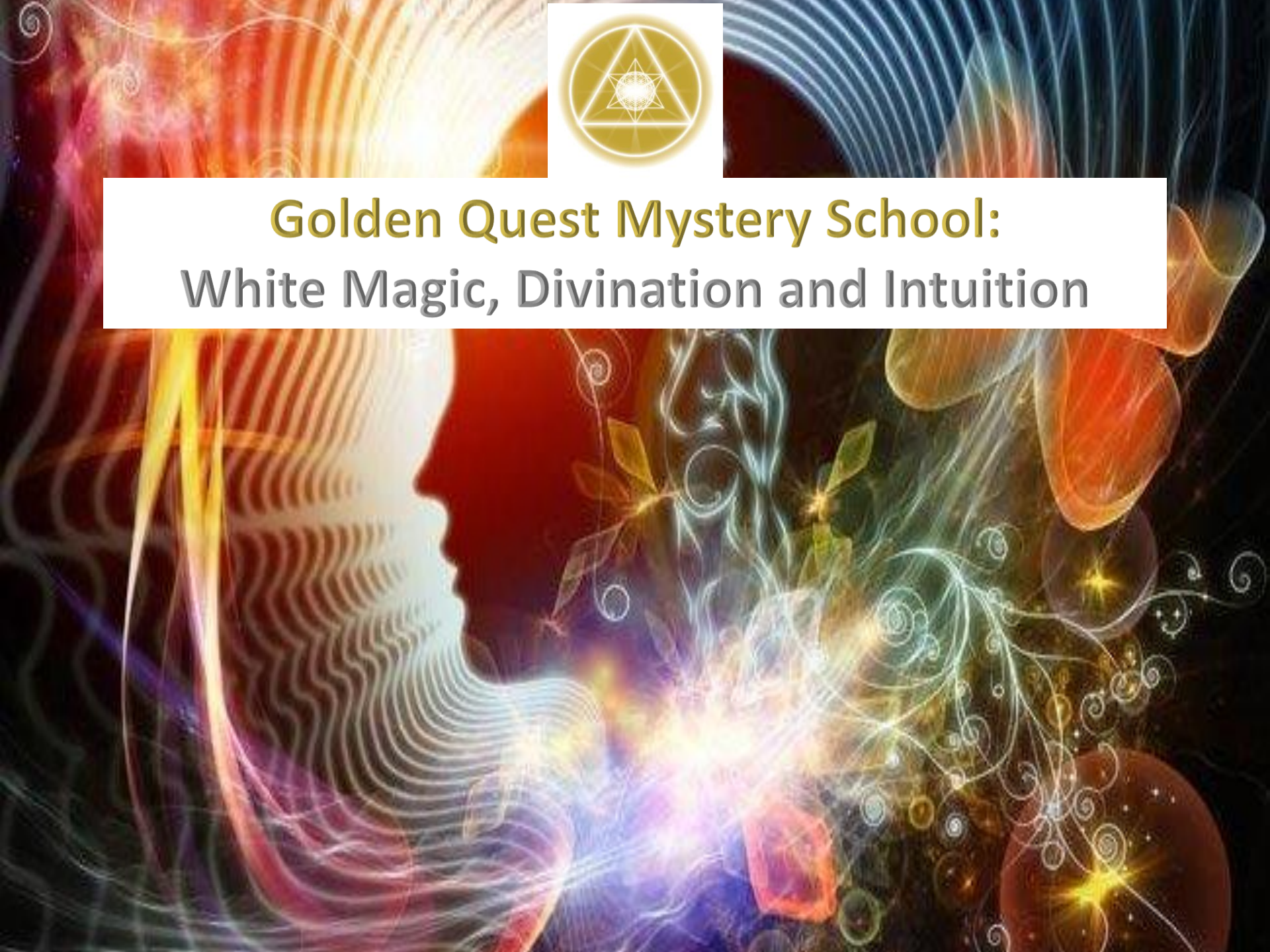




Golden Quest Mystery School:
White Magic, Divination and Intuition

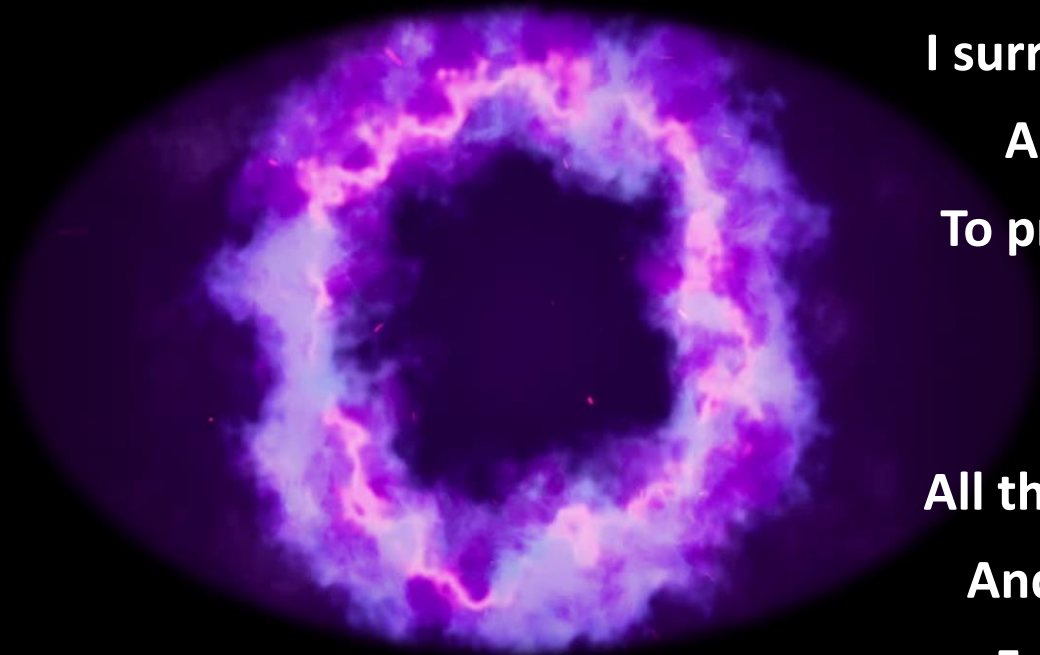




OPENING ALIGNMENT

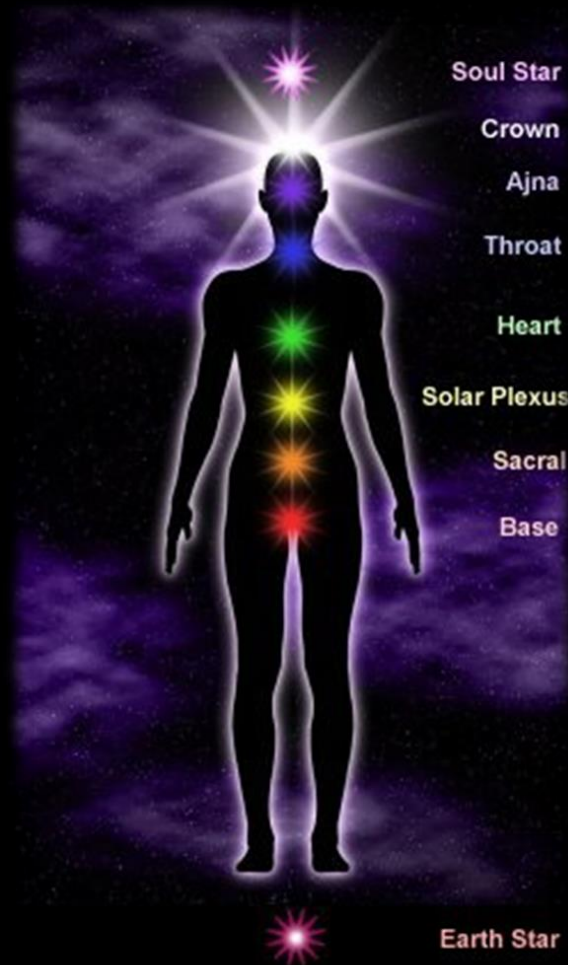
Use this alignment each time you sit down
to read, study or meditate

PRAYER OF PROTECTION



**I surround myself in a circle of fire –
A ring-pass-not of protection
To protect me from all negativity –
Of any kind on any plane,
And to bring to me –
All the good to which I can respond,
And with which I can cooperate.
For this blessing I give thanks.**

Individual Alignment – *I Am The Soul*



Soul Star

Crown

Ajna

Throat

Heart

Solar Plexus

Sacral

Base

Earth Star

Soul Star

Turban of

I am the Soul, and also Love am I

Above all else, I am, -both will and fixed design

My Will is now to lift the lower self into the
light divine

That Light am I

Therefore, I must descend, to where that
lower self awaits

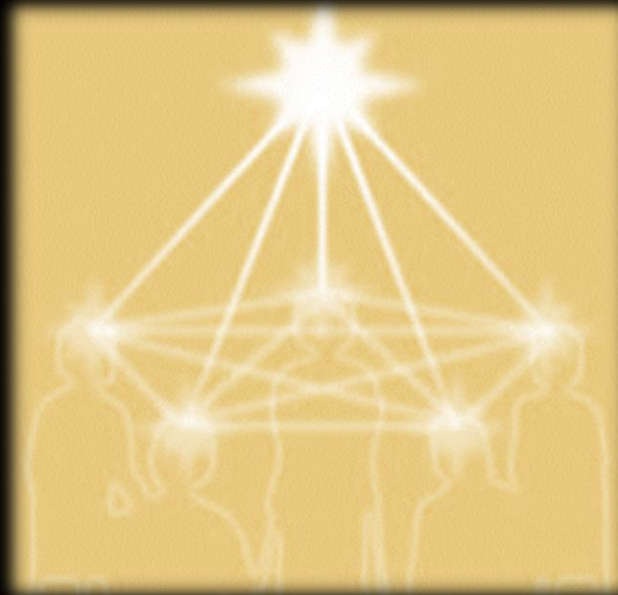
Awaits my coming

That which desires to lift and that which cries
for lifting

Are now at one - Such is my Will!

GROUP ALIGNMENT

GROUP Soul Star



- **Linking to other groups and individuals on the Path**
- **Linking to the network of light that surrounds the planet**



Affirmation of the Disciple: We say together

I am a point of light within the greater light

I am a strand of loving energy with the stream of Love Divine

I am a point of sacrificial fire, focused within the fiery will of God – and thus I stand

I am a way by which humanity can achieve

I am the source of strength, enabling them to stand.

I am a beam of light, shining upon their way – and thus I stand

And standing thus revolve

And tread this way the way of men

And know the way of God, and thus I stand.

THE GREAT INVOCATION



THE GREAT INVOCATION*

**From the point of Light within the mind of God
Let light stream forth into human minds
Let Light descend on Earth.**

**From the point of Love within the Heart of God
Let love stream forth into human hearts
May the Coming One return to Earth.**

**From the centre where the Will of God is known
Let purpose guide all little human wills
The purpose which the Masters know and serve.**

**From the centre which we call the human race
Let the Plan of Love and Light work out
And may it seal the door where evil dwells.**

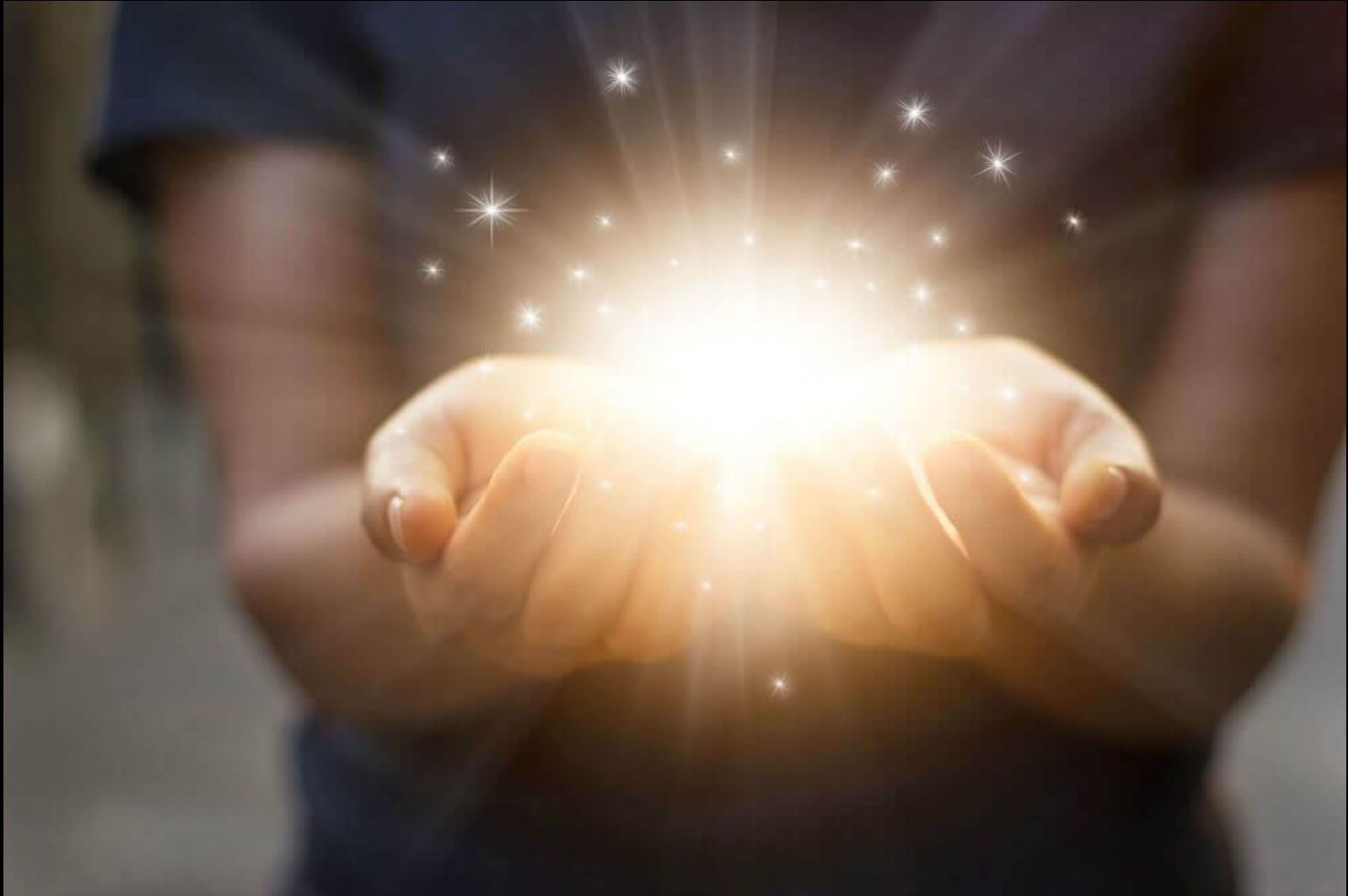
Let Light and Love and Power restore the Plan on Earth.

THE NEW GROUP OF WORLD SERVERS

AND SO IT IS!



Special Project: Rituals With Susan Reynolds





Creating Sacred Space

Special Project: The “Claire’s” With Uni Smith



Exercise 1 – JOURNALING EXERCISE

In this moment:

What do you want?

What do you need?

What is your greatest fear?

What is your dearest wish?

What do you need to be happy?

What is your ambition?

What is your greatest talent?

What is your most formidable obstacle?

How are you your own worst enemy?

With what part of your life are you most satisfied?

What is missing in your life?

In which area of your life would you most like to see change in the coming year?

What is your mission?

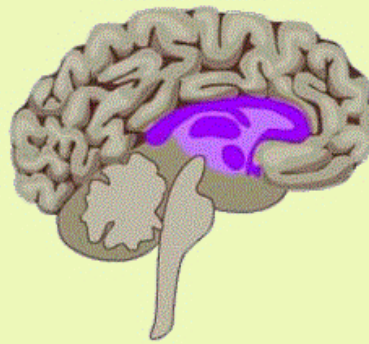
Why Study Intuition?

We are evolving from
the emotional body
to the mental body

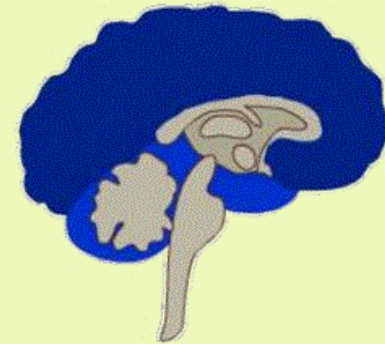
The Three-Parted Brain



Lizard Brain
(Brain stem and cerebellum)
Autopilot
Fight & Flight



Mammal Brain
(Limbic System)
Emotions
Memories
Habits
Attachments



Human Brain
(Neo-Cortex)
Language, abstract thought, imagination, consciousness, reasoning, rationalising

(From Paul D. MacLean's model of the "Triune Brain")

Ray 6 – The Ray of Devotion and Abstract Idealism



The seeds of all devotion and desire pour forth through this energy.

It generates adherence, intensity and persistence. The determination resident in this ray is a fiery essence, sometimes full of force, fury and even fanatical display and militant violence.

Abstraction and aspiration characterize the sixth force, in the sense of an idealistic nature, loyally oriented toward the causal levels of being.

The sixth ray is the power to recognize what is right and righteous, the upward tendency and the capacity to see the light.

Ray 6

- Devotion.
- Adherence to form and persons.
- Idealism, loyalty, creeds.
- Emotional response.
- Sentimentality.
- Interference
- World saviours and teachers.
- Fanaticism.
- Superstition.

Ray 7 – The Ray of Organization and Ritual



This ray is seen as the most tangibly expressive on the outer planes. It is the quality of relationship between spirit and matter.

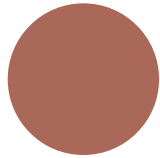
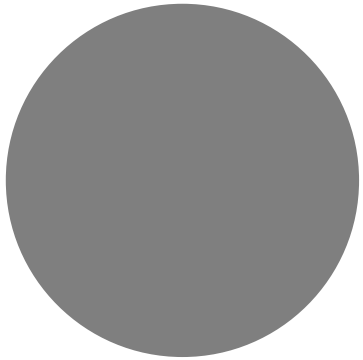
It is rhythm which builds, integrates, circulates and manifests.

It is the bringer and producer of newness in form. The relational power of this ray motivates law and order, rule and ritual, organization and group consciousness.

It is practical understanding and vital energy externalized, which embodies both the center and the periphery.

Ray 7

- Magical work.
- Relation of the opposites.
- Subterranean powers.
- That which brings together.
- The physical body.
- The mysterious and the secret.
- Sex magic.
- Emerging manifested forces.



Fruit Stand Mediation



A golden cube is positioned at the bottom center of the frame. From its top surface, a bright, glowing beam of light extends upwards, filling the upper portion of the image. The beam is surrounded by a dense field of small, sparkling particles, creating a magical and ethereal atmosphere. The background is a dark, deep red, which makes the golden light and sparkles stand out prominently.

Healing Prayer
Box